

# Dietary transition and food system disruption in forested areas of Indonesia

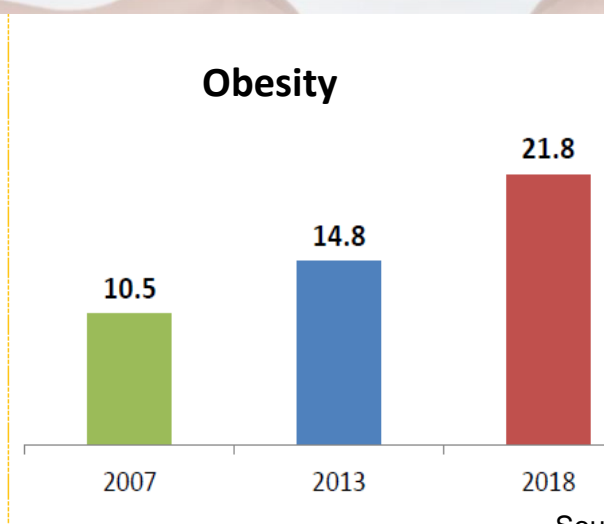
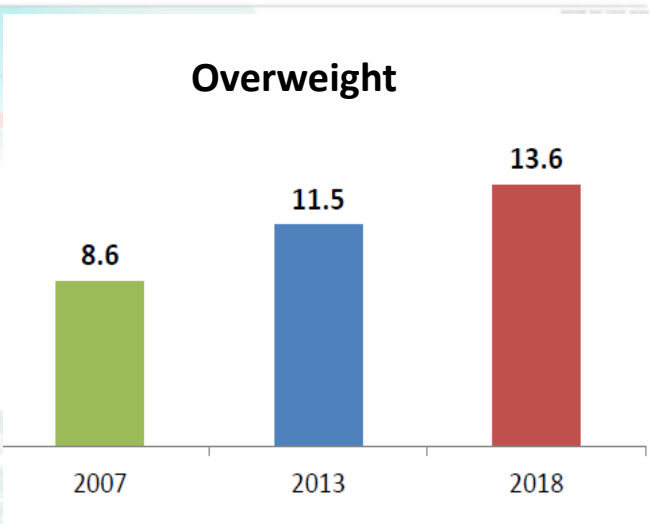
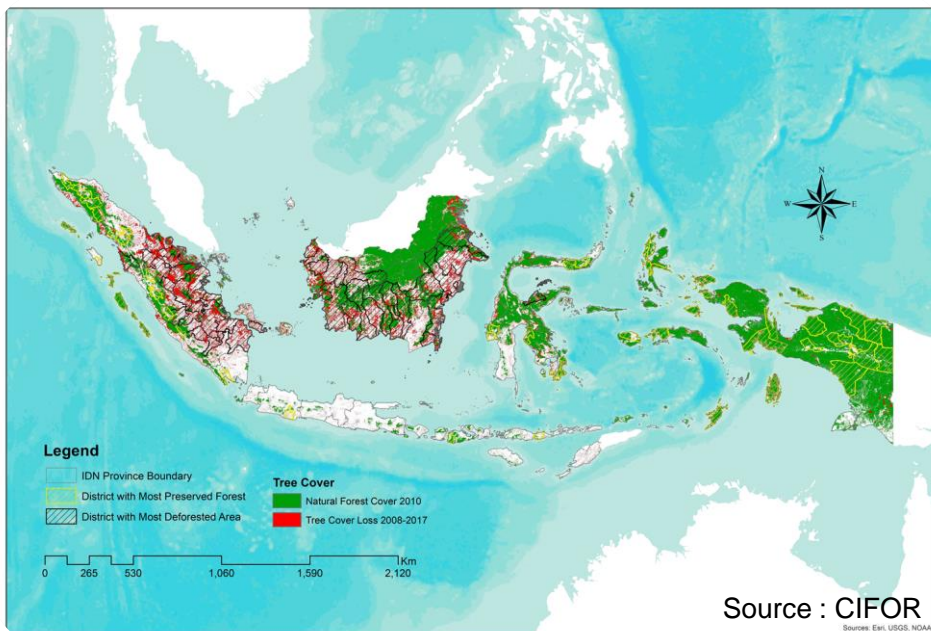
Mulia Nurhasan<sup>1</sup>, Ferry Hurulean<sup>2</sup>, Amy Ickowitz<sup>1</sup>

<sup>1</sup>Center for International Forestry Research, Bogor, Indonesia

Research and Development Agency of West Papua Province, Manokwari, Indonesia

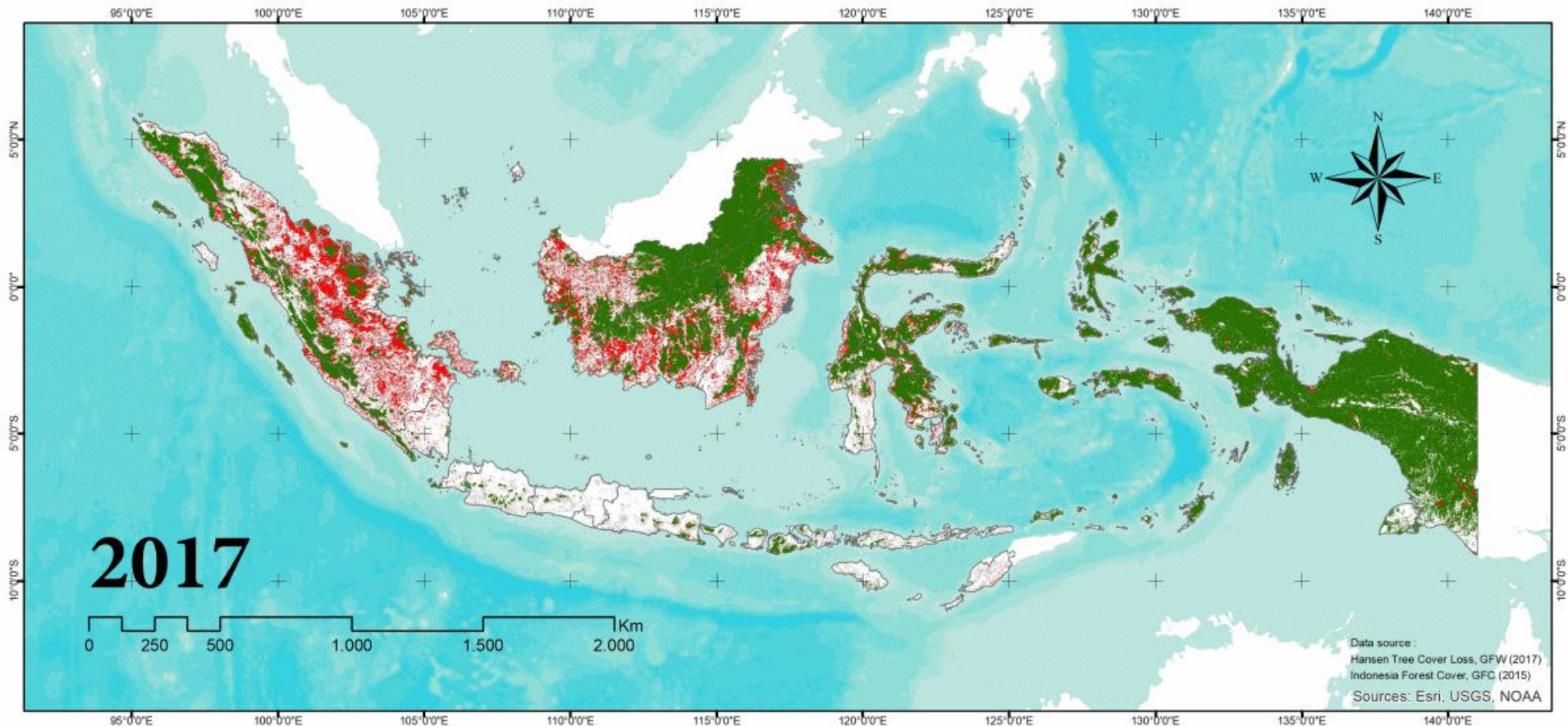






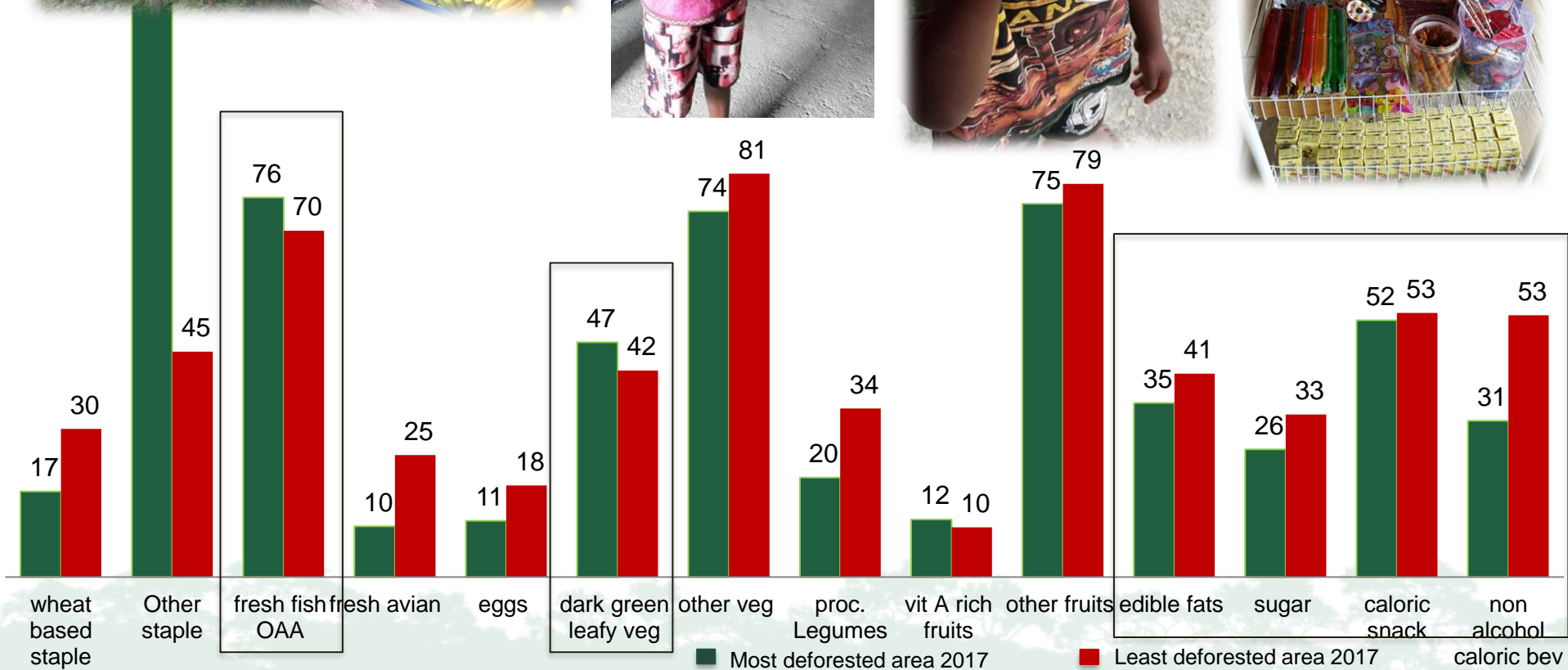
Source: Riskesdas 2018

# Indonesia Forest Cover Loss 2008-2017



Source : CIFOR



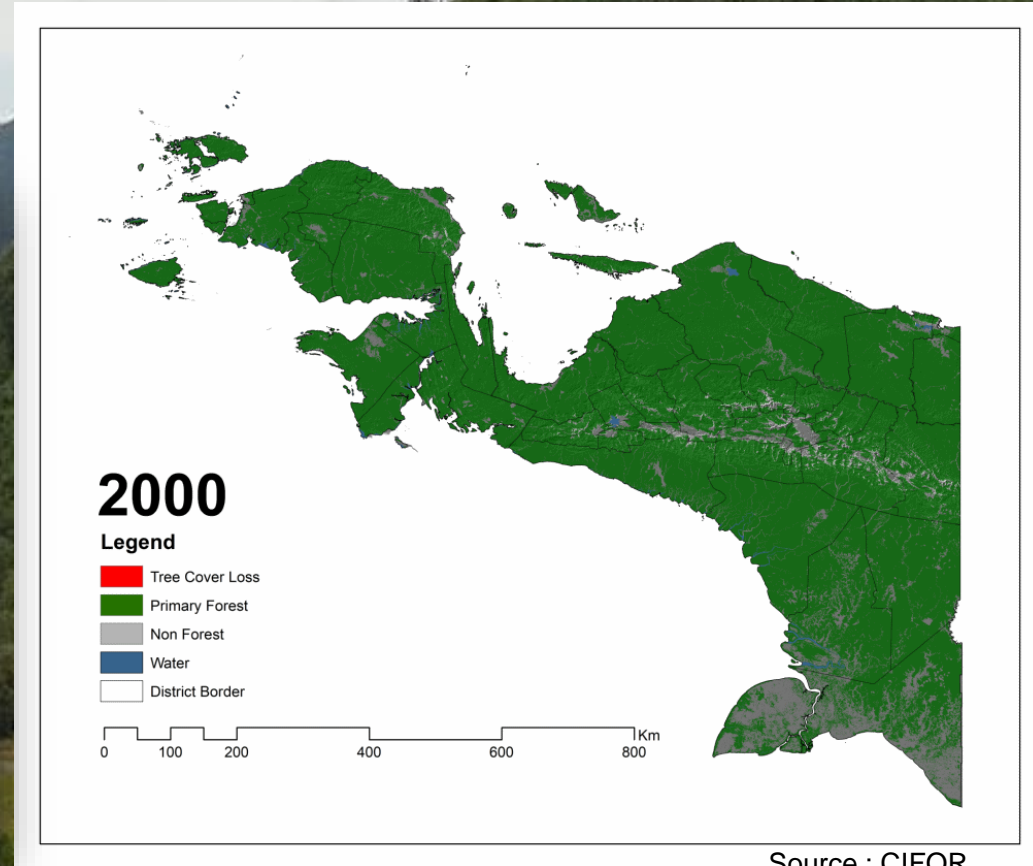


# West Papua Province

A province in the largest tropical island in the world



Photo source : ailumulia



Source : CIFOR





Photo Source : ailumulia

*“I bought instant noodles sometimes five thousands, biscuits ten thousands, puffed snacks five thousands. That popcorn was ten (thousands). Today I spent fifty (thousand). Tomorrow again another 50 thousand”.*





Photos Source: FOLU

***“We have everything. The production of tubers, production of local foods is (enough) to fulfill the population needs”***

***“The indigenous people are still depending on their forest. Therefore, the thing that should be regulated now is about how the land-use, how large-scale use of forest can be stopped”***

***“The availability of rice makes the indigenous people consume rice. They are not gardening, hunting, and gathering anymore”***







Photo Source : @ailumulia

Mongabay Series: [Southeast Asian infrastructure](#)

## Indigenous Papuans initiate own lockdowns in face of COVID-19

by Basten Gokkon on 6 April 2020



**Challenging road access and lockdown, high malnutrition rate, and dependency to imported food...**





Photo Source : Ferry Hurulean

**West Papua government are increasing campaign for local food production and consumption, hoping the pandemic will accelerate the process to achieve more sustainable and resilient food systems.**



## The COVID-19 pandemic is...

**...a challenge because impact of food systems disruption is worsened by heavy reliance on imported foods.**

**....an opportunity because local communities are eager to improve their dietary pattern to be more sustainable**

Photo Source : @ailumulia





**CIFOR is  
working with  
local partner to  
understand the  
contribution of  
forest foods to  
rural and  
urban  
consumers**

Photo Source : @ailumulia

**Thank you 😊**

# Donors, Partners and Supporters

- UK Climate Change Unit (UKCCU) and UK aid
- USAID Office of Forestry and Biodiversity
- Research and Development Agency of West Papua Province (Balitbangda Provinsi Papua Barat)
- WRI Indonesia
- EcoNusa Foundation

**Opinions stated in the presentation belong to the presenter and contributors, and do not necessarily represent the opinion of the donors, partners and supporters.**



# THANKS VERY MUCH!



cifor.org  
forestsnews.cifor.org  
ForestsTreesAgroforestry.org



BILL & MELINDA  
GATES *foundation*



RESEARCH  
PROGRAM ON  
Forests, Trees and  
Agroforestry